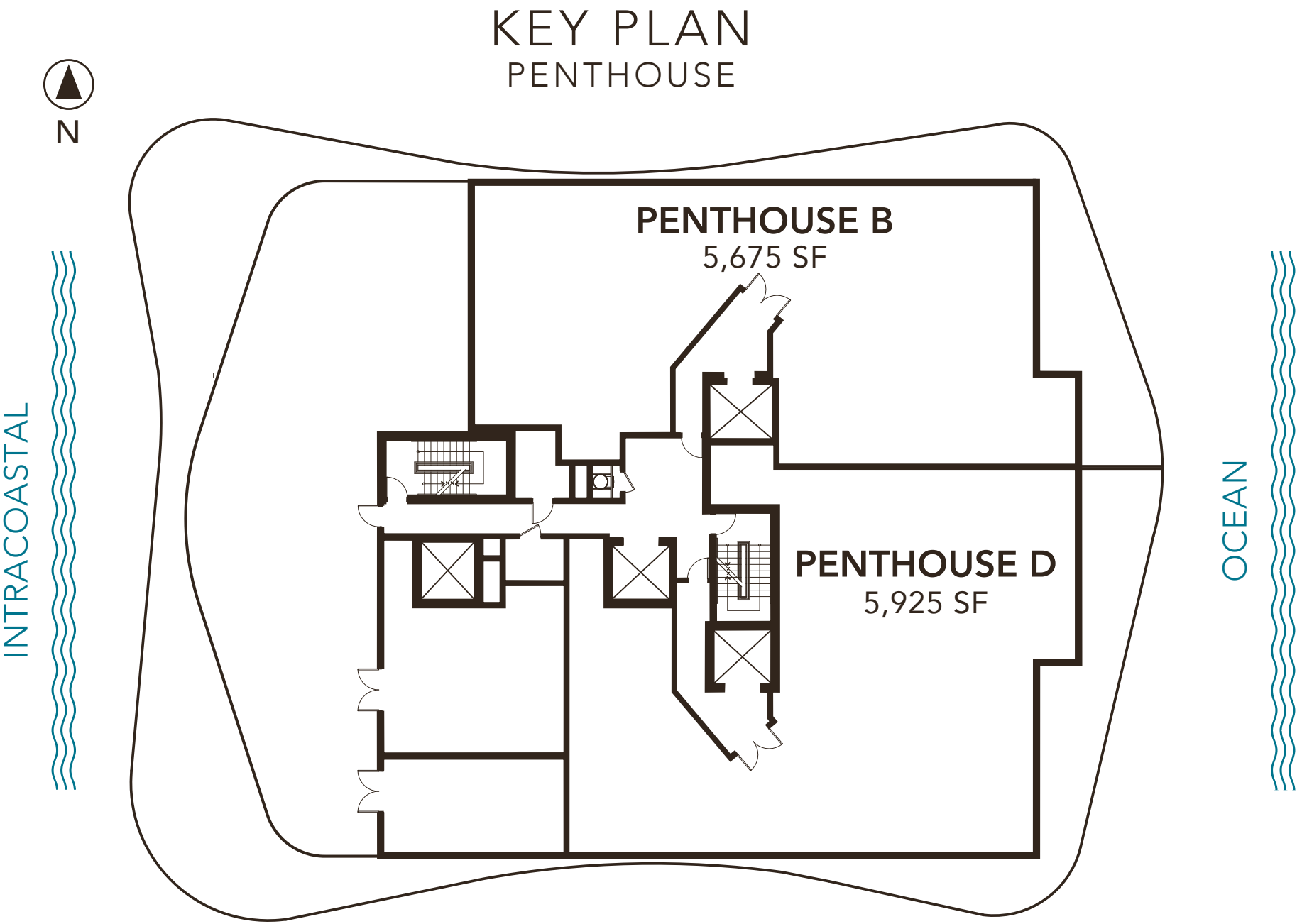




Sabbia
BEACH

PENTHOUSE
FLOOR PLANS

FLOORS 19 & 20



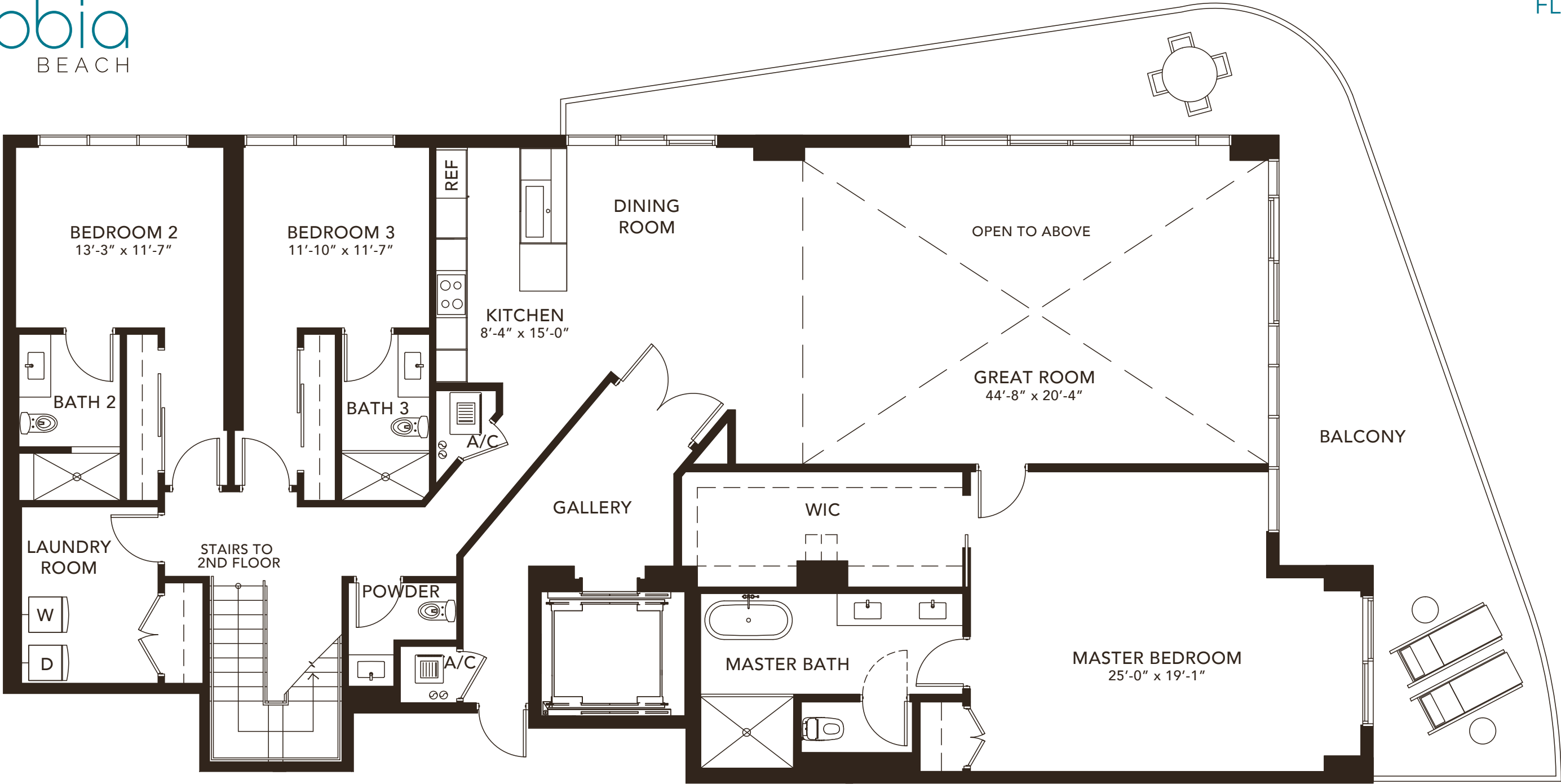
PENTHOUSE B

6 BEDROOMS 6.5 BATHROOMS	
A/C AREA	5,675 SF
BALCONY	948 SF
TOTAL	6,623 SF

PENTHOUSE D

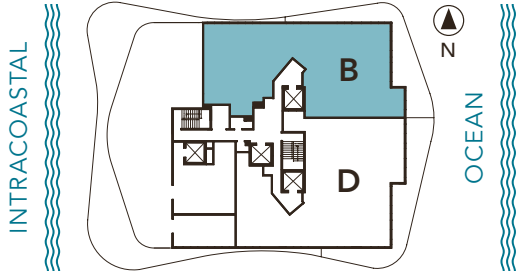
5 BEDROOMS 6 BATHROOMS	
A/C AREA	5,925 SF
BALCONY	1,218 SF
TOTAL	7,143 SF


Bernardo Fort Brescia



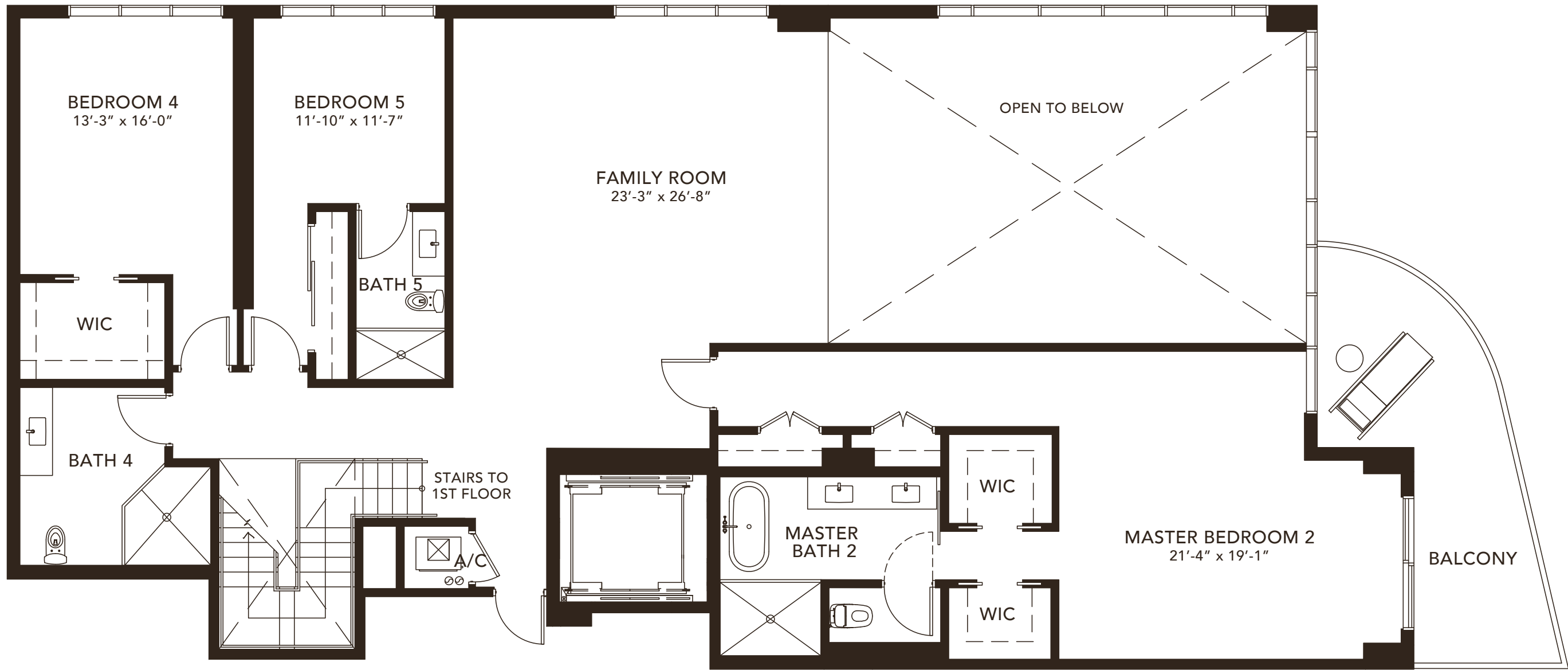
PENTHOUSE B
FIRST FLOOR

6 BEDROOMS 6.5 BATHROOMS	
A/C AREA	5,675 SF
BALCONY	948 SF
TOTAL	6,623 SF



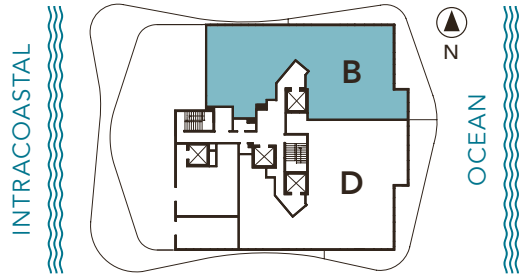
Bernardo Fort Brescia
Bernardo Fort Brescia

PLANS, MATERIALS AND SPECIFICATIONS ARE SUBJECT TO ARCHITECTURAL AND OTHER REVISIONS AT THE SOLE DISCRETION OF THE DEVELOPER, BUILDER OR ARCHITECT, OR AS MAY BE REQUIRED BY LAW. FLOOR PLANS SHOWN ARE NOT TO ANY PARTICULAR SCALE. ALL DIMENSIONS ARE MEASURED TO THE EXTERIOR BOUNDARIES OF THE EXTERIOR WALLS, CORRIDOR WALLS AND TO THE CENTERLINE OF INTERIOR DEMISING WALLS AND MAY VARY FROM THE DESCRIPTION AND DEFINITION OF THE "UNIT" SET FORTH IN THE DECLARATION. ALL DIMENSIONS ARE APPROXIMATE, AND ALL FLOOR PLANS AND DEVELOPMENT PLANS ARE SUBJECT TO CHANGE.



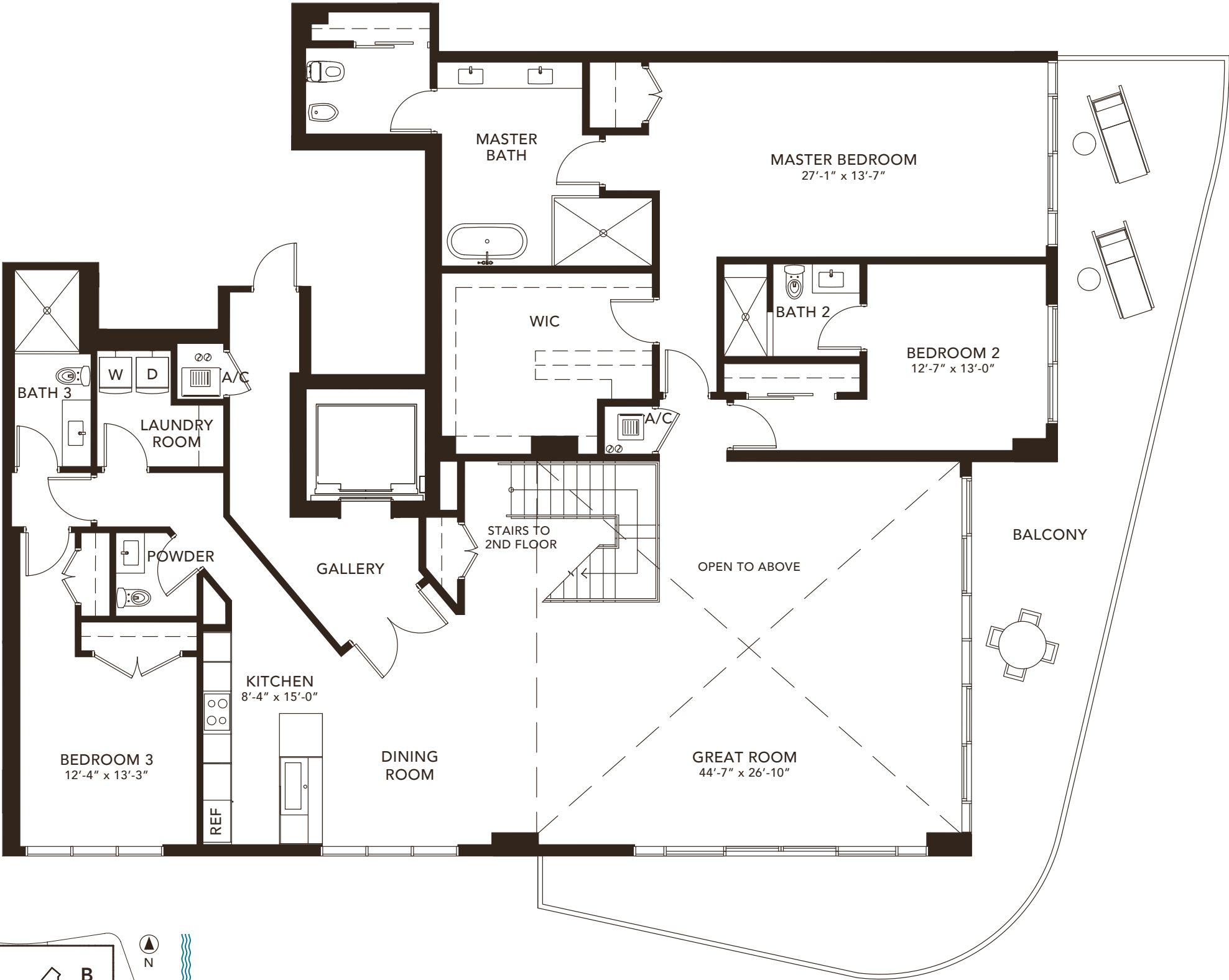
PENTHOUSE B
SECOND FLOOR

6 BEDROOMS 6.5 BATHROOMS	
A/C AREA	5,675 SF
BALCONY	948 SF
TOTAL	6,623 SF



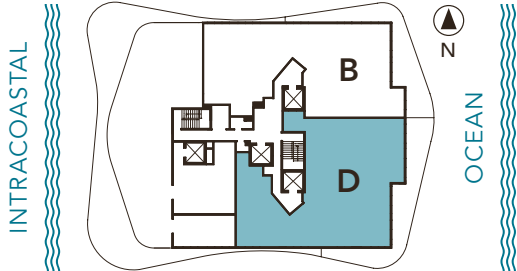
Bernardo Fort
Bernardo Fort Brescia

⚠️ PLANS, MATERIALS AND SPECIFICATIONS ARE SUBJECT TO ARCHITECTURAL AND OTHER REVISIONS AT THE SOLE DISCRETION OF THE DEVELOPER, BUILDER OR ARCHITECT, OR AS MAY BE REQUIRED BY LAW. FLOOR PLANS SHOWN ARE NOT TO ANY PARTICULAR SCALE. ALL DIMENSIONS ARE MEASURED TO THE EXTERIOR BOUNDARIES OF THE EXTERIOR WALLS, CORRIDOR WALLS AND TO THE CENTERLINE OF INTERIOR DEMISING WALLS AND MAY VARY FROM THE DESCRIPTION AND DEFINITION OF THE "UNIT" SET FORTH IN THE DECLARATION. ALL DIMENSIONS ARE APPROXIMATE, AND ALL FLOOR PLANS AND DEVELOPMENT PLANS ARE SUBJECT TO CHANGE.



PENTHOUSE D
FIRST FLOOR

5 BEDROOMS 6 BATHROOMS	
A/C AREA	5,925 SF
BALCONY	1,218 SF
<hr/>	
TOTAL	7,143 SF



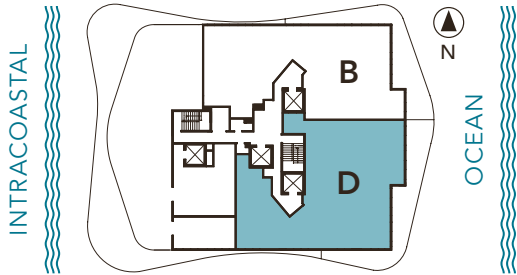
Bernardo Fort
Bernardo Fort Brescia

⚠️ PLANS, MATERIALS AND SPECIFICATIONS ARE SUBJECT TO ARCHITECTURAL AND OTHER REVISIONS AT THE SOLE DISCRETION OF THE DEVELOPER, BUILDER OR ARCHITECT, OR AS MAY BE REQUIRED BY LAW. FLOOR PLANS SHOWN ARE NOT TO ANY PARTICULAR SCALE. ALL DIMENSIONS ARE MEASURED TO THE EXTERIOR BOUNDARIES OF THE EXTERIOR WALLS, CORRIDOR WALLS AND TO THE CENTERLINE OF INTERIOR DEMISING WALLS AND MAY VARY FROM THE DESCRIPTION AND DEFINITION OF THE "UNIT" SET FORTH IN THE DECLARATION. ALL DIMENSIONS ARE APPROXIMATE, AND ALL FLOOR PLANS AND DEVELOPMENT PLANS ARE SUBJECT TO CHANGE.



PENTHOUSE D
SECOND FLOOR

5 BEDROOMS 6 BATHROOMS	
A/C AREA	5,925 SF
BALCONY	1,218 SF
TOTAL	7,143 SF



Bernardo Fort
Bernardo Fort Brescia


⚠️ PLANS, MATERIALS AND SPECIFICATIONS ARE SUBJECT TO ARCHITECTURAL AND OTHER REVISIONS AT THE SOLE DISCRETION OF THE DEVELOPER, BUILDER OR ARCHITECT, OR AS MAY BE REQUIRED BY LAW. FLOOR PLANS SHOWN ARE NOT TO ANY PARTICULAR SCALE. ALL DIMENSIONS ARE MEASURED TO THE EXTERIOR BOUNDARIES OF THE EXTERIOR WALLS, CORRIDOR WALLS AND TO THE CENTERLINE OF INTERIOR DEMISING WALLS AND MAY VARY FROM THE DESCRIPTION AND DEFINITION OF THE "UNIT" SET FORTH IN THE DECLARATION. ALL DIMENSIONS ARE APPROXIMATE, AND ALL FLOOR PLANS AND DEVELOPMENT PLANS ARE SUBJECT TO CHANGE.

Sabbia

BEACH

ON THE OCEAN | OF THE OCEAN

730 NORTH OCEAN BOULEVARD, POMPANO BEACH, FL 33062

 This offering is subject to errors, omissions, prior sale, change of price, or withdrawal without notice, and not intended to solicit currently listed property. This is not an offer to sell or solicitation of offers to buy condominium units in states where such offer or solicitation cannot be made. Prices, plans, and specifications are subject to change without notice. Void in states where prohibited. Additional restrictions may apply. Artist's conceptual renderings.

ORAL REPRESENTATION CANNOT BE RELIED UPON AS CORRECTLY STATING THE REPRESENTATIONS OF THE DEVELOPER. FOR CORRECT REPRESENTATIONS, MAKE REFERENCE TO THIS BROCHURE AND TO THE DOCUMENTS REQUIRED BY SECTION 718.503, FLORIDA STATUTES, TO BE FURNISHED BY A DEVELOPER TO A BUYER OR LESSEE.

Developed by:

FERNBROOK
— FLORIDA —

Exclusive Sales
and Marketing by:


HEMISPHERE

Architecture by:

ARQUITECTONICA

Interior Design by:

Intentions by *STEVEN G. INC.*
Interior Design

Advertising & Interactive by **LGD** Miami